

|                                      |            |   |               |
|--------------------------------------|------------|---|---------------|
| <b>NOMACHINE</b>                     |            | Appendix A - General HowTo's<br>Run a Windows Terminal Server session |               |
| Prepared by:<br>Bartolo Qualano      |            | N°:<br>D-309/10-NXH-DOC   |               |
| Approved by:<br>Gian Filippo Pinzari | Signature: | Date:<br>07/06/2007   | Amended:<br>B |

**Appendix A  
General HowTo's**

# **Run a Windows Terminal Server session**

|                                      |            |   |               |
|--------------------------------------|------------|---|---------------|
| <b>NOMACHINE</b>                     |            | Appendix A - General HowTo's<br>Run a Windows Terminal Server session |               |
| Prepared by:<br>Bartolo Qualano      |            | N°:<br>D-309/10-NXH-DOC   |               |
| Approved by:<br>Gian Filippo Pinzari | Signature: | Date:<br>07/06/2007   | Amended:<br>B |

## Index

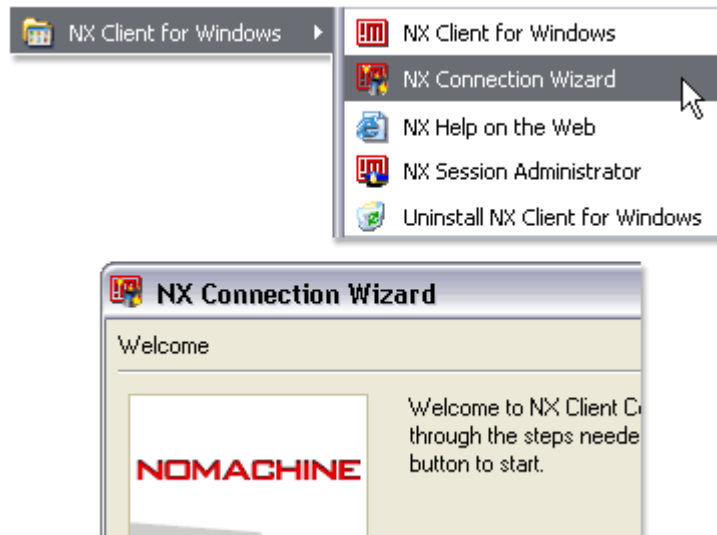
|   |   |
|---|---|
| 1. Appendix A – Run a Windows Terminal Server session ..... | 3 |
| 1.1 Configure.....  | 3 |
| 1.2 Login.....  | 6 |

|                                      |            |   |               |
|--------------------------------------|------------|---|---------------|
| <b>NOMACHINE</b>                     |            | Appendix A - General HowTo's<br>Run a Windows Terminal Server session |               |
| Prepared by:<br>Bartolo Qualano      |            | N°:<br>D-309/10-NXH-DOC   |               |
| Approved by:<br>Gian Filippo Pinzari | Signature: | Date:<br>07/06/2007   | Amended:<br>B |

## 1. Appendix A – Run a Windows Terminal Server session

### 1.1 Configure

Run NX Connection Wizard.



Insert the session name, for example "Windows on my Host", host name and port of NX Server. Select the speed of your Internet connection. ADSL should be OK in most cases, but you can select MODEM or ISDN if you have a slow link. Now click "Next".

|                                      |            |   |               |
|--------------------------------------|------------|---|---------------|
| <b>NOMACHINE</b>                     |            | Appendix A - General HowTo's<br>Run a Windows Terminal Server session |               |
| Prepared by:<br>Bartolo Qualano      |            | N°:<br>D-309/10-NXH-DOC   |               |
| Approved by:<br>Gian Filippo Pinzari | Signature: | Date:<br>07/06/2007   | Amended:<br>B |

Insert name of the session. Your configuration settings will be saved with this name.

Session

Insert server's name and port where you want to connect.

Host  Port

Select type of your internet connection.

MODEM
  ISDN
  ADSL
  WAN
  LAN

Choose "Windows" from first select.

Using NX Client you can run RDP, VNC and X desktops, depending on what the service provider has made available.

Select size of your remote desktop.

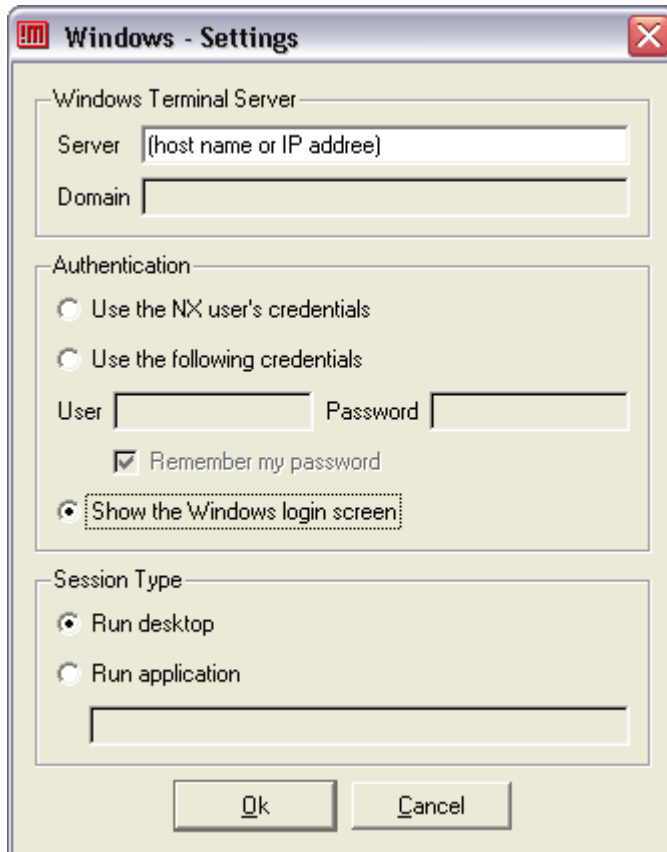
W: 
 H:

Authorization credentials are always encrypted at the time connection is established. For increased security, you can enable the following option.

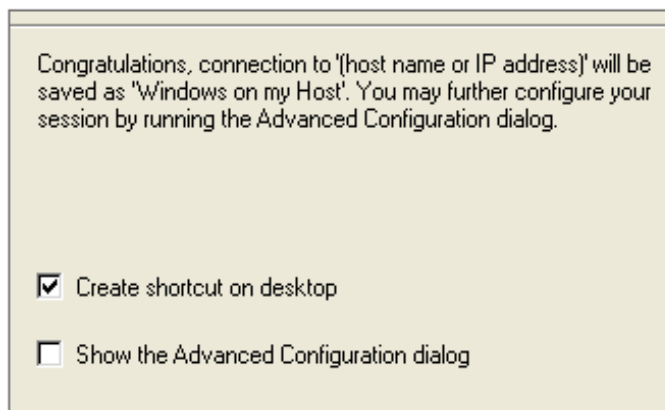
Disable SSL encryption of all traffic

Insert the host name of Windows Server, check "Run desktop" and click "OK".

|                                      |            |   |               |
|--------------------------------------|------------|---|---------------|
| <b>NOMACHINE</b>                     |            | Appendix A - General HowTo's<br>Run a Windows Terminal Server session |               |
| Prepared by:<br>Bartolo Qualano      |            | N°:<br>D-309/10-NXH-DOC   |               |
| Approved by:<br>Gian Filippo Pinzari | Signature: | Date:<br>07/06/2007   | Amended:<br>B |



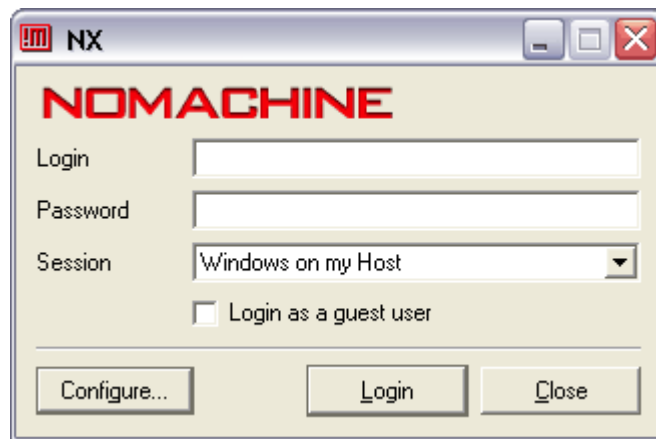
Check the boxes "Create shortcut on desktop" and "Show the Advanced Configuration dialog" according to your preferences. Click "Finish".



|                                      |            |   |               |
|--------------------------------------|------------|---|---------------|
| <b>NOMACHINE</b>                     |            | Appendix A - General HowTo's<br>Run a Windows Terminal Server session |               |
| Prepared by:<br>Bartolo Qualano      |            | N°:<br>D-309/10-NXH-DOC   |               |
| Approved by:<br>Gian Filippo Pinzari | Signature: | Date:<br>07/06/2007   | Amended:<br>B |

## 1.2 Login

If everything went OK you should see login dialog of NX Client.



Insert the Login and Password for NX Server and click on "Login" button.

